

14th October 2024

Dear Families

Welcome to our first newsletter of the school year. It has been fantastic to welcome all our new Little Wrens and Robins who started in September, and 2 other new families. They are already very much part of the Mill View TEAM!

We hope you enjoy reading about some of the things that have been happening across our school family since term began and that you find the additional information and diary dates useful in planning ahead.

Out and About

As always when we take our children out and about for their learning, every class has returned to school having been complimented on their brilliant behaviour by members of the public and staff in venues. We look forward to hearing more from Robins and Kestrels after their trips later this term.

Safety Central

Year 2 and Year 5 went on visits to Safety Central. Cheshire Fire and Rescue Service's award-winning education centre at Lymm near Warrington is focussed on helping people to understand how they can keep themselves safe. It is a realistic indoor village that uses special effects and the latest technology to provide immersive, interactive and inspiring learning led by a team of rangers who set exciting challenges and activities for visitors. The learning wasn't only about preventing fires. They also explored safety on the roads, in the community and online as well as issues such as mental health, diversity and citizenship with our older children.



Team Falcons



Team Owls



Team Eagles

Our Year 6 children visited The Imperial War Museum in Manchester as part of their learning about World War 2. They completed a Ministry of Memory mission, studied artefacts and learned about stories relating to many different conflicts.



Team Hawks

Year 4 are learning all about the Romans and enjoyed a recent trip into the city centre. They marched through Chester chanting their way to the amphitheatre with a Roman soldier who shared lots of information and fun facts. They visited The Grosvenor Museum and had the opportunity to explore artefacts, learn lots and share what they'd already learned at school and home.



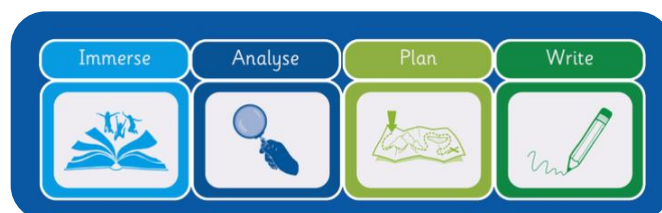
Team Sparrows

Our Year 1s visited The Museum of Liverpool as part of their learning about old fashioned toys. They took part in a workshop and were able to explore a range of toys from different time periods. They also had a chance to explore the museum and visit Little Liverpool which is a hands-on fantasy world where children can play and learn.



Publishing

There has been some beautiful publishing being completed across school. This is a culmination of weeks of work that have helped the children to really get to know a key text and then create their own unique piece of writing from that genre. Some classes have shared spoken versions of their stories with their families on Seesaw.



We are incredibly grateful to our wonderful Bookmaking Group who meet every week at school to create beautiful books for our children to publish their final pieces in. If anyone is interested in joining them on a Friday afternoon do please get in touch.

Meet the Governors

Our Local Governing Board is made up of community representatives, parents and school staff. They meet 9 times a year and also work with staff between these meetings to ensure clarity of vision, ethos and strategic direction. Below is an introduction to our Chair of Governors, do look out for him at school pick up and say hello!

Stephen Webb - Co-opted Governor and Chair of Governors

I joined the Local Governing Body at Mill View Primary School in May 2019 and was elected to the role of Chair in September 2019, a role I have held since that date.

I bring to the role of governor over 40 years of experience as a professional educator. I was a teacher in Primary education and subsequently held the role of Head Teacher of a 3-form entry Primary school. Since leaving that post, I have worked as a coach and trainer in educational leadership for national and local bodies, as well as individual schools and academy trusts. This experience has allowed me to bring insight and understanding to the important strategic process of school governance. It has also enabled me to be both supportive of the school's leaders as well as questioning and challenging of them. I believe that the LGB's role is to be a proactive and accountable part of a leadership process that offers the children, families and community served by the school, the best educational offer possible. On a personal level, I am a parent and grandparent and therefore frequently reminded of the issues and priorities that families face in society today and in the future.



Apple Pressing

Lots of our classes and families had the opportunity to come along and use the apple press at school last week. A big thank you to the volunteers who made this possible after school.



Parent Survey Results

Thank you to all those who completed our **Parent Survey online** in the Summer Term. The survey covered the areas below, gathering your thoughts and opinions about these. Below you will see the % of positive responses for each area benchmarked against other schools. As you will see, we compared favourably when benchmarked against other schools. However it remains important to us that **we take note of all your feedback** and continue to improve in consultation with everyone in our TEAM. You will see some themes from the survey results in our strategic plans.

Strategic Plans

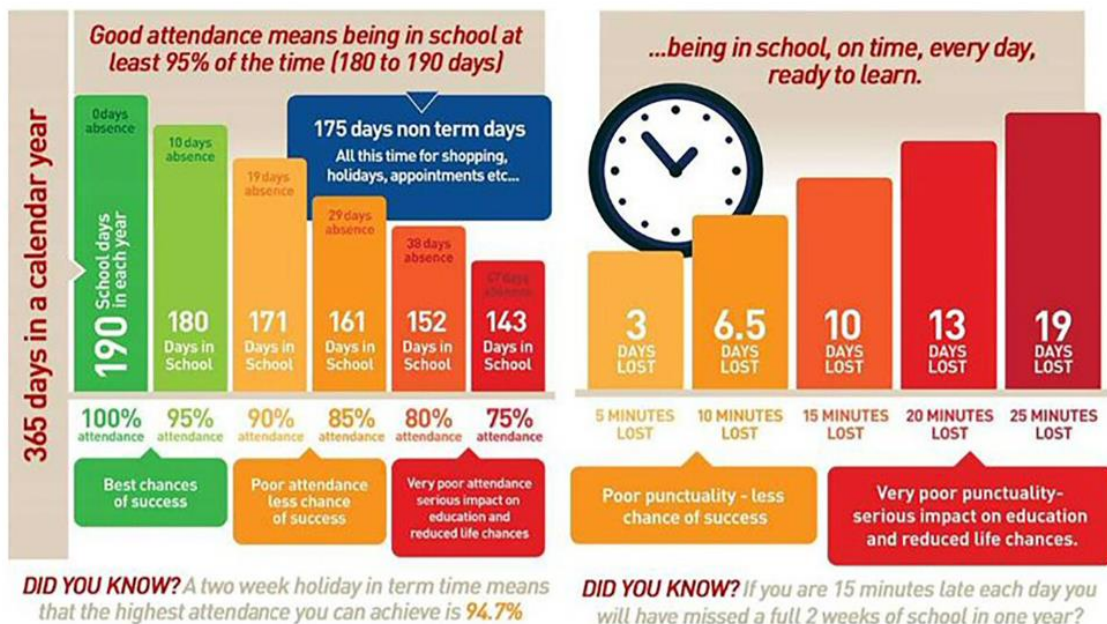
Take a look at our [strategic plans on the school website](#). You will find more information about the **Critical Success Factors** we believe are important in continuing to improve Mill View. You will also find the projects completed in 2023-24 and the planned projects for 2024-25.

Attendance

You will have already received **updated information** from our Office regarding changes to rules regarding attendance. Further information can be found [on our website here](#). Please take particular note of information relating to [the new National Framework](#) for issuing fixed penalty notices which came into force in September 2024.

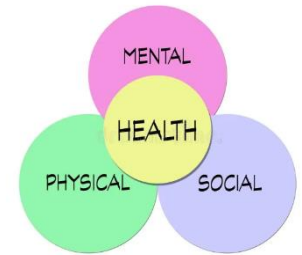
Module summary from most to least positive

Positive responses	Against benchmark	
93%	+10%	General
91%	+5%	Mutual trust and respect
90%	+7%	Parental confidence
89%	+7%	Communication methods
88%	+6%	Pupil needs
87%	+7%	School accessibility
86%	+9%	Informing parents
78%	+3%	Parents' events
72%	+11%	Relationship with the Trust



Looking After our Mental Health

We are committed to helping our children learn the importance of understanding how to look after their mental health and emotional wellbeing to enable them to recognise how they are feeling, know when they are struggling, build a range of strategies and have healthy relationships with others. A huge part of this work is done through our RSHE lessons. This area of our curriculum is led by Mrs Redmond and Mrs Neale. You will have already received an invitation to join us on Wednesday 16th October from 2.45-3.15pm when our classes from Year 1 to Year 6 will be sharing some of their RSHE work from this term. If you have children in more than one class you will be able to move between those classes. Please don't worry if you are not able to join us as Mrs Redmond will be sharing further information from the event afterwards.



Staying Safe Online

BBC Own It have partnered with Internet Matters to produce [easy to access support and advice for parents](#). Navigating the digital world is a huge area of safeguarding for our children that we all need to really understand and be proactive in managing. It is so much easier to set healthy habits for children from an early age rather than waiting for a problem to arise.



Safeguarding Team

Mill View Safeguarding Team works together with a range of outside agencies to keep our children safe and make sure they learn how to keep themselves safe.



Mrs Gibbons
Designated Safeguarding Lead



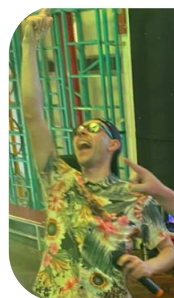
Mrs Hetherington
Deputy Designated Safeguarding Lead



Mrs Nicholls
Deputy Designated Safeguarding Lead

PTA

Our new PTA committee have been doing lots of planning and organising of events for this term and the coming year. The children who came along to the two PTA discos had a fabulous time and we want to say a huge thank you to DJ Morris who did a great job! We are looking forward to welcoming families to our Bingo evening next Wednesday!



Best wishes,

Mrs Gibbons & The Mill View TEAM

We are the Mill View TEAM
Together Everyone Achieves More



DIARY DATES	
Information regarding school trips and class events will be shared directly on Seesaw. Please check dates on every newsletter to avoid missing additional dates or changes. MVP holiday dates can be found here millviewschool.co.uk/page/holiday-dates/123901	
Wellbeing sharing event 2.45-3.15pm	Wednesday 16 th October
STEAM week for all classes during school day	Monday 21 st to Friday 25 th October
PTA Family Bingo School Hall 4.30-6.00pm	Wednesday 23 rd October
Individual and family group photos . There will be an option to bring younger siblings in before school and any Little Wrens not in school that day. Further information to follow from Admin.	Thursday 24 th October
LAST DAY OF AUTUMN 1 TERM	Friday 25 th October
HALF TERM BREAK	
FIRST DAY OF AUTUMN 2 TERM	Tuesday 5 th November
Parents' Evenings	Tuesday 5 th and Wednesday 6 th November <i>No after school clubs this week. Miller Club runs as usual.</i>
PTA Meeting at school 7.30-9.00pm	Thursday 7 th November
STEAM project Share the Learning – families invited into class. Presentations will also be recorded and posted on Seesaw if you're not able to join us.	Friday 15 th November Year 1&2 – 2.00-2.20pm Year 3&4 – 2.20-2.40pm Year 5&6 – 2.40-3.00pm <i>No Celebration Assembly this week</i>
Chester Lantern Parade – come along and support Team Eagles!	Thursday 28 th November at 7pm
Family Grounds Day – come along as a family to help us to keep our Forest School, Kitchen garden and grounds looking amazing	Sunday 1 st December – 10am onwards
PTA Christmas Fair	Friday 6 th December Note change of date
Robins, Sparrows and Owls Christmas performance at 1.45pm	Tuesday 17 th and Wednesday 18 th December
Kestrels, Hawks, Falcons and Eagles Christmas Celebration 1.45pm and 6.00pm	Thursday 19 th December
LAST DAY OF AUTUMN 2 TERM	Friday 20 th December
CHRISTMAS BREAK	
FIRST DAY OF SPRING 1 TERM	Tuesday 7 th January
LAST DAY OF SPRING TERM 1	Friday 14 th February